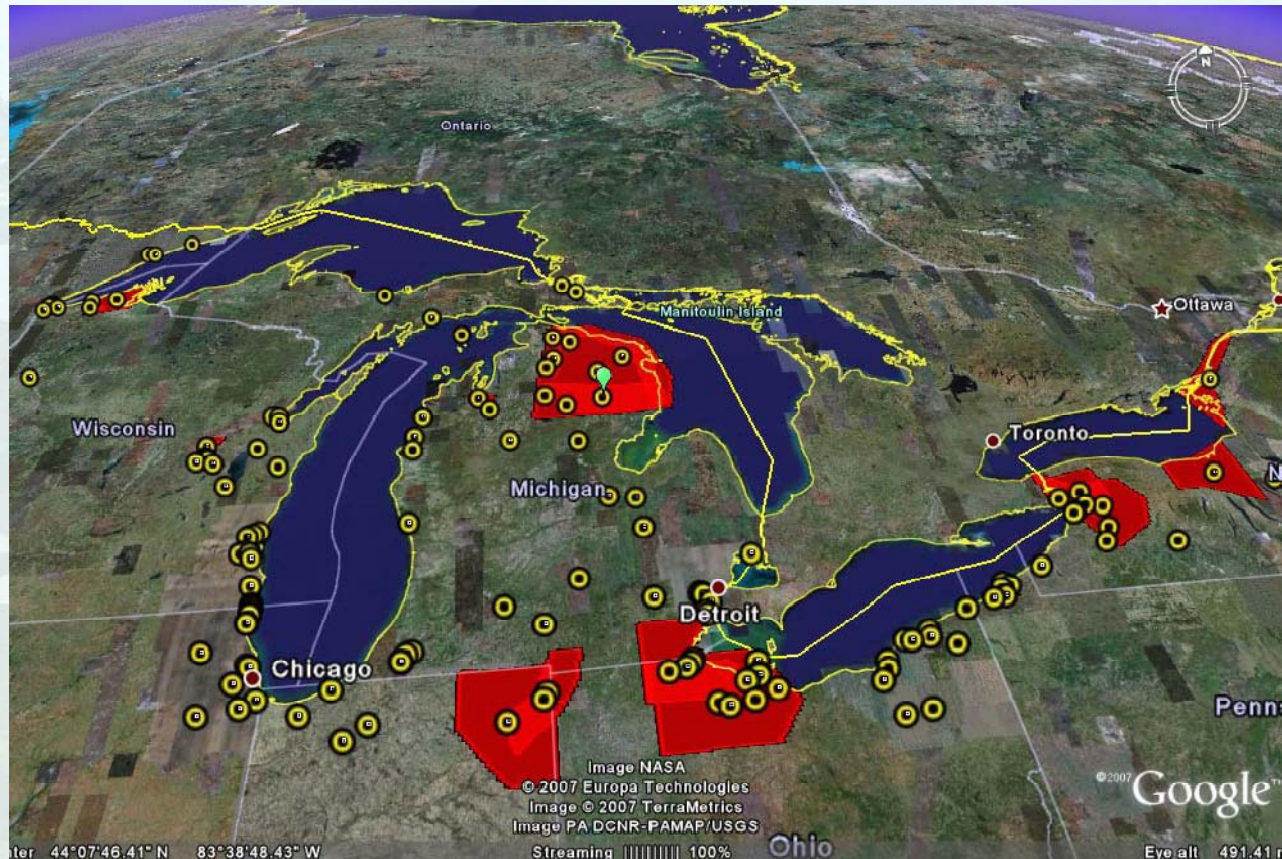


GLRC Habitat/Species Subcommittee Restoration/Protection Web Tools



An aerial photograph of a winding river flowing through a lush green landscape. The river meanders across the scene, creating a series of loops and curves. The surrounding area is a mix of vibrant green fields and dense, dark green forests. In the distance, a thin line of trees separates the land from a large, light blue body of water, likely a lake or a wide river. The overall scene is peaceful and scenic. The word "Background" is overlaid in the center in a bold, black, sans-serif font.

Background

Web Tools Purposes

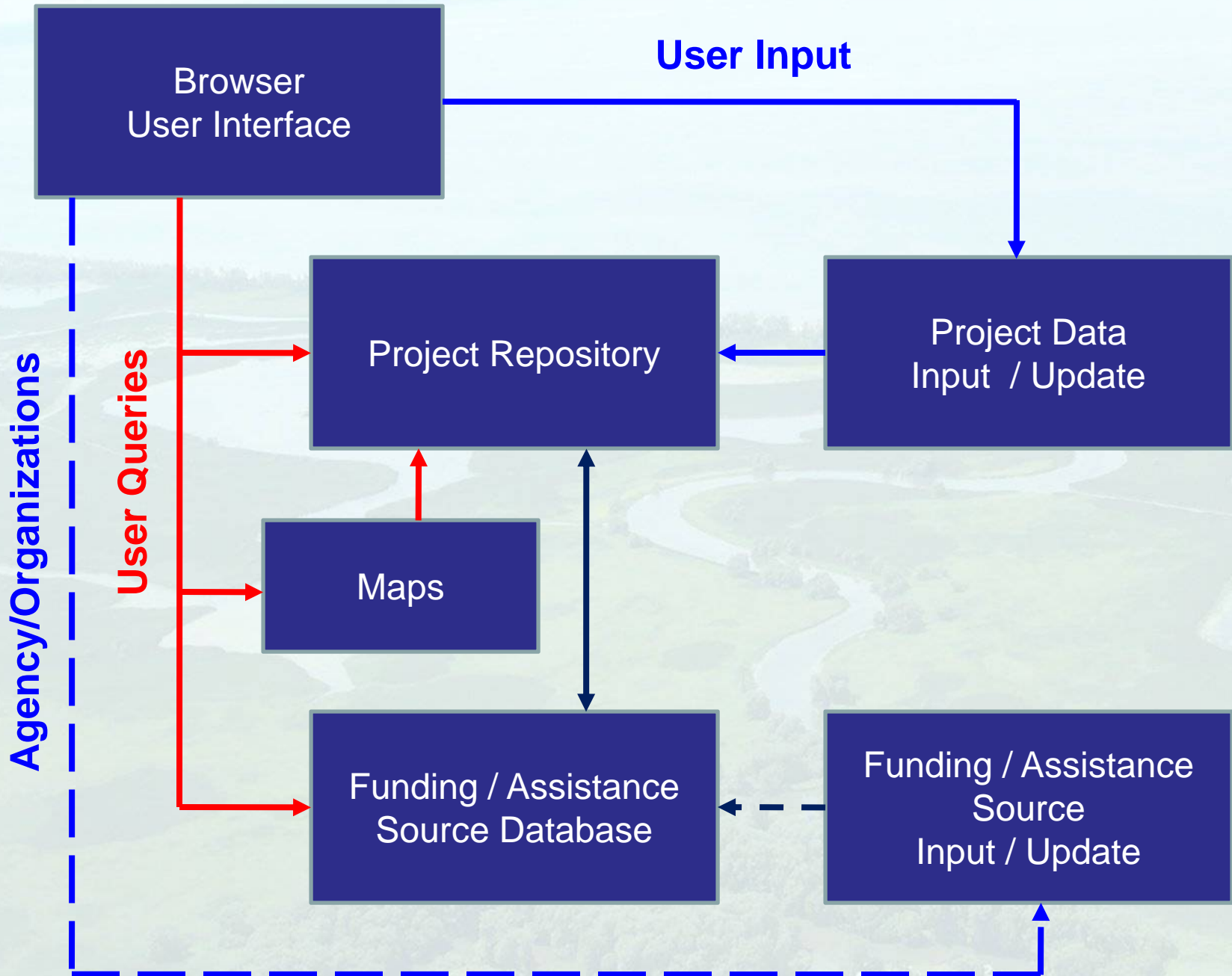
- Web-based entry/query tools designed to collect information about potential restoration projects and applicable funding / assistance programs
- Three key objectives:
 - Enhance collaboration between potential project sponsors at all levels of government to advance projects from one phase to the next
 - Provide consistent and comprehensive information to help agencies to prioritize resource allocations
 - Help define unmet funding needs under specific authorities to advance advocacy efforts by the Great Lakes Commission

Web Tools Features

- Consistent, comparable data and information about habitat protection and restoration projects across a state and/or entire Great Lakes basin
- Version 1.0 of the tools has about 240 prospective projects and 130 funding sources identified
- Version 2.0 includes improved “look and feel,” project benefit assessments, greater emphasis on project phases, enhanced query capabilities and a link between projects and most likely funding sources

An aerial photograph of a lush green landscape. A winding river flows through the center, leading to a large, irregularly shaped lake in the upper left. The background shows a dense line of trees and a hazy horizon. The overall scene is bright and natural.

Components of Web Tools



An aerial photograph of a wetland or marsh area. A winding waterway, possibly a river or stream, flows through the landscape, which is characterized by green fields and dense vegetation. The waterway has several meanders and a large, irregularly shaped pond or lagoon on the left side. The overall scene is a natural, undeveloped landscape.

Project Repository

Online Protection/Restoration Database



Great Lakes Habitat Restoration Initiative - Project Database

This is your opportunity to provide the GLRC and GLHI project team with information highlighting your efforts in supporting the goals of the Great Lakes Regional Collaboration.

Please click [here](#) to enter.

When complete, this database provides the GLHI with information on site-specific actions that can be implemented under existing funding authorities to protect and restore wetlands and aquatic habitat in the region. The information collected in this database will be shared and used by numerous collaboration and project partners. Additional information regarding the project database is available in the FAQs.



[Login](#) | [Register](#) | [Search](#) | [Map Query](#)



Project Entry – Basic Information



Projects

My Projects

Enter New Project

Full Project Database

Query the Database

Download the Database

Map Projects

Demo Projects

Home Contact Logout

Basic Information

Partners

Geography

Benefits

Costs

Other

Funding Match

[save](#) | [reset](#) | [help](#)

Title

Official title of project, inclusive of location and type of restoration work being done. Title limited to 255 characters.

Example

Abstract

Brief narrative summary of the project. Abstract limited to 6000 characters.

Example

Project Type

Select primary function

- Restoration/Rehabilitation/Creation ?
- Enhancement/Improvement ?
- Protection ?
- Other (eg education, monitoring, research) ?



Other input fields:

Project Phase

Project Timeline

Relevancy to GLRC Strategy

National/Regional Recognition

Organizational Ranking

Relations with Existing Projects

Compensatory Mitigation

Restoration Techniques and Measures

Access Constraints

Project Phases

Proposed - These projects should be part of a formal plan, grant application, or other official document and must include specified geographic areas, restoration objectives and identified anticipated benefits.

Planning Initiated – A formal planning study is underway but not yet complete

Design Initiated – Engineering design work has begun and/or non-structural preparations (land acquisition, conservation easements, biologic methods) are being investigated

Preparations Completed - Planning/design activities for the project have been completed but no on-the-ground restoration activities have begun.

Implementation Started - On-the-ground protection or restoration activities have begun

Post-Completion - On-the-ground implementation activities such as major construction and planting are completed. Project monitoring, adaptive management, and other project management activities may be ongoing.

Project Entry - Geography



Projects

My Projects

Enter New Project

Full Project Database

Query the Database

Download the Database

Map Projects

Demo Projects

Home Contact Logout

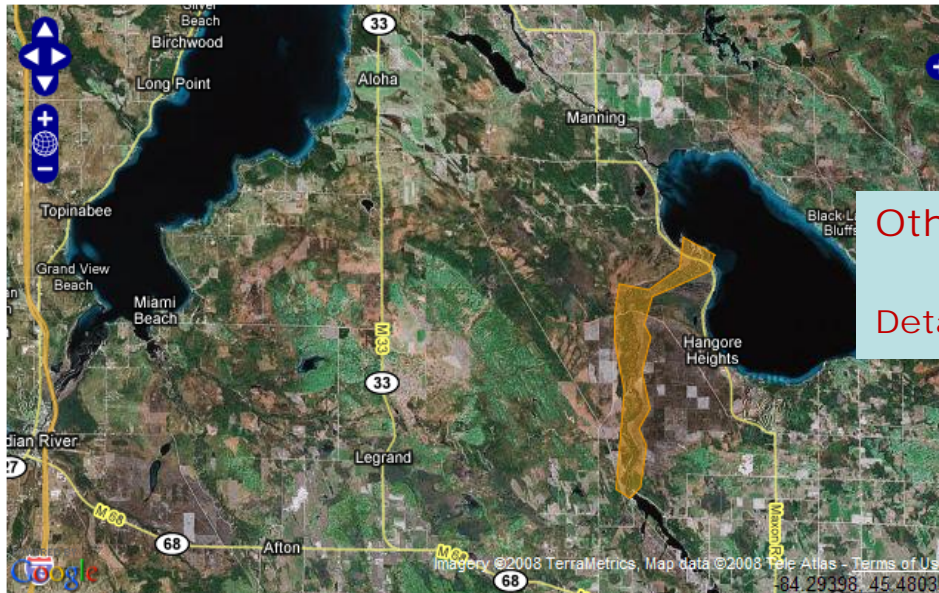
Basic Information Partners **Geography** Benefits Costs Other Funding Match

[save](#) | [reset](#) | [help](#)

Geographic Extent of Project Area

Use navigation tools to zoom into project area and delineate project area using the [Select Project Area](#) tool. To modify or remove a delineated area, use the [Modify/Remove Project Area](#) tool.

Defining an area allows for the automatic population of certain variables critical to the description of the project including the x/y coordinates, the county, state, and congressional district information, land cover information, soils information, Conservation Blueprint information, NWI information, rare, unique, or protected habitat/species information, and hydrologic unit (HUC) information for the project area.



Other input fields:

Detailed Habitat Types

Pan Map

Select Project Area

Modify/Remove Project Area



Geographic Coordinate Capture Tool

Automatically harvests:

- State
- County
- Township
- Congressional District
- Project acreage
- 8-digit watershed code
- NHD line segment
- Current land cover / habitat types
- Wetlands mapping (NWI, etc.)
- Soil types
- Rare, unique or protected species or habitats
- Part of TNC Conservation Blueprint
- Other available GIS features



Project Entry - Benefits



Projects

[My Projects](#)

[Enter New Project](#)

Full Project Database

[Query the Database](#)

[Download the Database](#)

[Map Projects](#)

[Demo Projects](#)

[Home](#) [Contact](#) [Logout](#)

[Basic Information](#) [Partners](#) [Geography](#) **[Benefits](#)** [Costs](#) [Other](#) [Funding Match](#)

[save](#) | [reset](#) | [help](#)

Ecological Stressors/Threats Affecting Area

Identify ecological stressors/threats that affect the project area. Ctrl+Click for multiple selections.

- Altered Hydrology
 - Water Level Changes
 - Draining
 - Filling and Dredging
 - Diking and Breakwalls
- Contaminants
 - Nutrient Loadings
 - Toxic/Chemical Loadings
 - Contaminated Sediments
- Invasive Species
 - Aquatic and Wetland Invasive Plants
 - Aquatic and Wetland Invasive Animals
 - Terrestrial Invasive Plants
 - Terrestrial Invasive Animals

LSC Coastal Habitat Restoration and Conservation Habitat Stressors



Other input fields:

Scarcity

Connectivity

Hydrologic Character

Geomorphic Condition

Reduction of Invasive Species

Rare, Threatened and Endangered

Status

Recreation

Environmental Justice

Subsistence-Harvest Needs

Sacred Sites

Cultural Resources

Self-Sustaining Character

Anticipated Ecological Outcomes

Identify the anticipated ecological outcomes to be realized through this project. Ctrl+Click for multiple selections.

- Build Resiliency to Climate Change
 - Enhance normal ice dynamics
 - Reduce adverse effects of droughts
 - Reduce adverse effects of flooding/storms
 - Enhance normal temperature regimes
- Improve Anthropogenic Use
 - Increase ecotourism opportunities
 - Increase non-destructive recreation
 - Increase hunting and fishing opportunities
- Improve Native Habitats
 - Improve spawning habitat
 - Improve rearing habitat
 - Increase juvenile survival
 - Improve wildlife habitat

Project Entry – Funding Match



Projects

[My Projects](#)

[Enter New Project](#)

Full Project Database

[Query the Database](#)

[Download the Database](#)

[Map Projects](#)

[Demo Projects](#)

[Home](#) [Contact](#) [Logout](#)

[Basic Information](#) [Partners](#) [Geography](#) [Benefits](#) [Costs](#) [Other](#) **[Funding Match](#)**

[save](#) | [reset](#) | [help](#)

Project Sponsorship

Likely Funding Sources

Based on the information that you provided so far, we have queried the funding source database and recommend that you explore the funding sources listed below to move this project ahead to the next phase. You can click on each of the listed items and will be directed to more detailed information in a pop-up window. You may have to temporarily allow for pop-ups to occur to see these details. After you have reviewed this information, please select the funding sources that you believe are most appropriate for this project. This information will be used to support long-range planning and advocacy efforts.

- [State and Tribal Assistance Grant Program \(STAG\) - U.S. EPA](#)
- [National Fish and Wildlife Foundation - NF&WF](#)
- [Planning Assistance to States - USACE](#)
- [Wetlands Reserve Program - USDA](#)
- [Land Conservation - Gaylord and Dorothy Donnelley foundation](#)

Other Funding Sources Desired

If you want to explore other funding sources, please review the eligibility requirements for other potential funding sources and check any that you feel are appropriate for your project.

- [American Rivers River Restoration Grants](#)
- [American Sportfishing Association's FishAmerica](#)
- [Anadromous Fish Grants](#)
- [Aquatic Ecosystem Restoration](#)
- [Aquatic Plant Control Program](#)

[Add to other sources to list](#)



An aerial photograph of a river delta system, showing a main river channel that branches out into several smaller channels and ponds. The surrounding landscape is a mix of green fields and dense forests. The image is slightly faded, and a large black text overlay is centered over the middle of the scene.

Funding / Assistance Sources

Great Lakes Funding Programs

ID
7

Program name:
Conservation Reserve/Enhancement Program (CRP/CREP)

Agency information:
U.S. Department of Agriculture

Program description:
The CRP and CREP is a voluntary program that provides funding to reduce soil erosion and sedimentation, improve water quality, maintain fish and wildlife habitat by restoring upland and grassland habitats.

Statutory authority:
Public Law 107-171, Farm Security and Rural Investment Act, Title II, Amended 2002

Geographic focus: National

Project activities: *Check all that apply.*

<input type="checkbox"/> Aquatic invasive species	<input type="checkbox"/> Habitat restoration/improvement	<input type="checkbox"/> Public information	<input type="checkbox"/> Toxic pollutants
<input type="checkbox"/> Areas of concern / sedimentation	<input type="checkbox"/> Indicators and information	<input type="checkbox"/> Research/Monitoring	<input type="checkbox"/> Other
<input type="checkbox"/> Great Lakes coastal health	<input checked="" type="checkbox"/> Nonpoint source pollution	<input type="checkbox"/> Sustainable development	
<input checked="" type="checkbox"/> Habitat conservation and species management	<input checked="" type="checkbox"/> Habitat protection	<input type="checkbox"/> Terrestrial invasive species	

Financial Information

Applicant eligibility:

Funding authorization:

Award cap:

Funding authorizations are contained in statutory language and reflect the maximum amount that can be appropriated. Actual monies appropriated to carry out activities under a statute vary depending on budget constraints and are often less than the authorized amount.

Match required

In-kind Match:

In-kind property

In-kind services

Match amount (%):

50

2003-2006 Average Annual:

Expenditures: \$1,907,666,667.00

Number of projects:

Deadlines:
Contact agency

Application process:
Producers can offer land for C

Assistance type:
Cooperative Agreement

Selection process:

Program notes:
Federal pass through money to states. Each state administers the program differently. For information regarding state programs, please contact the individual state program. Funding is based on a cap of 39.2 million acres, not an annual budget.

Save

Add a Program

Exit



Database Query Functions

By agency, project title, project ID or via other keywords

By geographic characteristics:

- Within state, county, township, congressional district
- Within particular watersheds or along particular river/streams
- Complementary/competing projects for same areas
- Affecting particular habitat types or species assemblages
- Ranking by differing agencies (e.g., USACE Habitat Initiative)

Map Queries

glnh_entered_projects_poly

Project ID	Project Title	Project Abstract	POC Email	POC First Name	POC Last Name	POC Title	POC Voice	Full Report URL
342	Twenty-first Ave. Complex habitat restoration	Emergent wetland and sheltered bay habitat is limited in the lower part of the St. Louis River estuary. The 21st Ave. complex provides a relatively large area of habitat potential. Diversifying habitat at this location would also enhance connections between fish and wildlife habitat associated with the river channel and other sheltered bays. An improved connection would increase	John.Lindgren@state.mn.us	John	Lindgren	Biologist	218-525-0853	http://gis.glin.net/dropbox/wetlands_print.php?sid=4buoq93eoa40c1nh33ae6erb671182368615



Great Lakes Habitat Restoration Initiative

Print Project

Record Number
342

Title
Twenty-first Ave. Com

Abstract
Emergent wetland and sh
also enhance connection
muskellunge and channel

Project Type
Restoration/Rehabilita

- Creation of hat
- Restoration of a

Project Status
Design Completed Pro

Achievement Towar
Some restoration of e

Compensatory Mitig
Is this project part of a
Yes

Brief Locality Descr
The 21st Ave. complex
lower portion of the river.



Follow-On Activities

- Continue to improve ease of use
- Add linear feature capability
- Improve acreage estimation
- Enhance external compatibility with national databases
- Seek continued support from states, tribes and NGOs to enter new projects and update entries
- Promote federal agencies to enter projects and utilize database in resource allocation decisions
- Implement a long-term sustainability plan
- **VERSION 2.0 FULLY OPERATIONAL ON 1/1/2009**

An aerial photograph of a winding river or stream flowing through a lush green landscape. The river meanders across the scene, surrounded by dense vegetation and fields. The background shows a hazy horizon under a bright sky. The text "Questions / Comments???" is overlaid in the center of the image.

Questions / Comments???